



A⁺ Touchstone Services

OUR PROFILE

About Us



1

Having taken off in the year 2003 with a clear focus to work on natural stones, we bring together an exceptional quality of practical consultancy & direct operational experience.

2

Over the years, we have partnered with architects, interior designers, real estate developers, consultants and stone dealers.

3

Having recognized the needs, we have established a service model wherein none of our operators is outsourced.

4

We focus on a long-time maintenance model which eliminates the need for any major restoration activity.

5

With 100+ highly trained operators, we have restored more than a million sq. ft. of stone surface without the use of any corrosive components.

6

Widely known as an innovator in the field of natural stone restoration and care, we presently have more than 50 lacs sq. ft. under our regular maintenance profile.

Vision

“

To be one of the most trusted organizations providing technology-based solutions, thereby enhancing the life of natural stones.



Mission



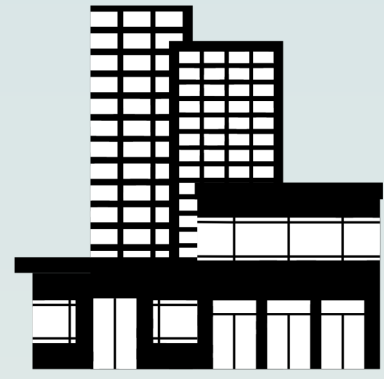
To be known as the experts in the maintenance and restoration of natural stones.

To create awareness on how to achieve longevity of natural stones.





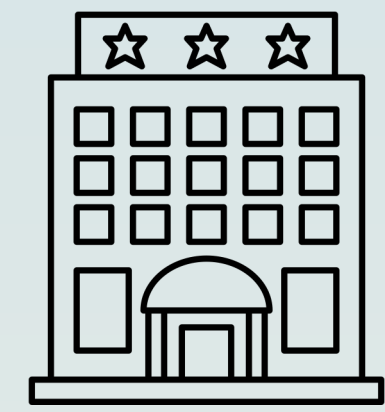
Targeted Work



Corporate



Residential



Hotels & Resorts



Airports



Hospitals



Banks



Nature of Stone

Marble is an extremely hard, metamorphic stone composed of calcite (CaCO_3). It is formed as a result of the recrystallization of limestone under the intense pressure and heat of geologic processes.

The effect of this process is the creation of a stone with a very tight crystalline structure and small but definite porosity.



However, marble is composed of Calcium Carbonate, which is highly susceptible to attack by acidic agents. Marble is readily dissolved by acids- even very dilute acids but the actual results of acidic exposure vary with the nature of the acid.



Concerns

Some of the concerns with this gentle stone

- Weathering
- Erosion
- Staining
- Sub-fluorescence
- Crumbling
- Chipping
- Cracking
- Detachment
- Efflorescence
- Flaking
- Spalling
- Sugaring
- Picture Framing
- Rising Damp



Services



1

Consulting

2

Restoration

3

Sealer
application

4

Stone
Enhancer

4

Honing

5

River-Wash

6

Stain Removal

7

Annual
Maintenance
Contract

Consulting

- 1 Site Audit to investigate the current status of the stone and the reasons for its failure.
- 2 Post and pre-stone installation advise on sealant application on stone as per site condition.
- 3 Advise on the way forward with respect to restoration.
- 4 Developing a maintenance schedule according to the traffic movement/density.
- 5 Advise on the cleaning re-agents
Develop site-specific checklists.



Restoration

Grinding is the process by which the surface is sanded to remove a few microns of the top layer of the stone surface by using specific diamond pads.

This process exposes a fresh layer displaying the natural colour and pattern of the stone.



Restoration

CRACK, PIT & JOINT REPAIR & FILLING

All existing cracks, pits and open joints are repaired using appropriate hardeners. Attention is given to matching the colour to that of the natural stone.



Before



After

Sealer Application

Sealer application ensures a drastic reduction in the porosity of the stone.

This, in turn, makes the surface protected against various environmental factors and spillages.



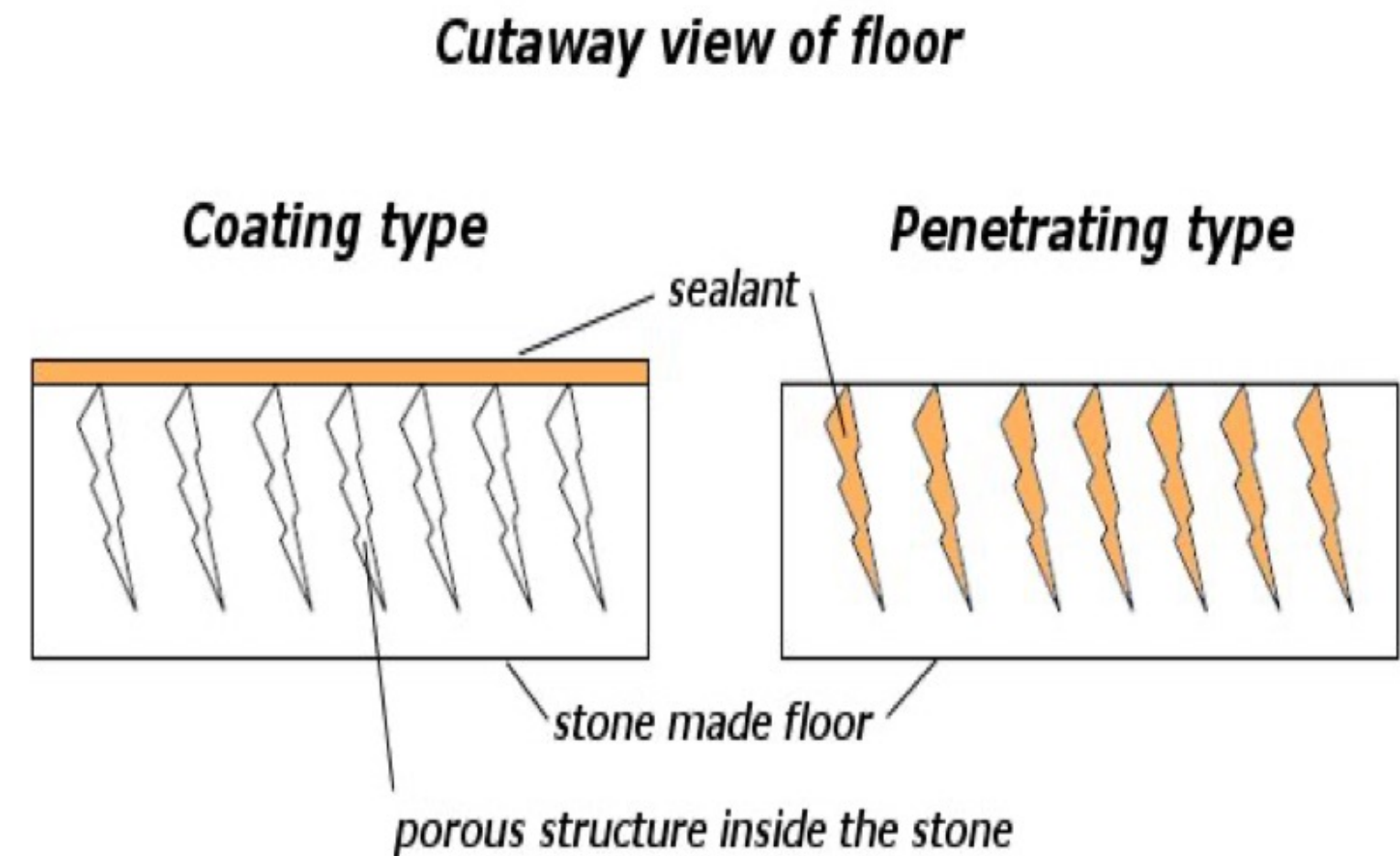


Why Seal?

Stone is porous by nature. The porosity and makeup of most stones leave them prone to certain types of damage if unsealed. In some cases, the damage is irreversible, for example, in picture framing.

Types of sealers:

- 1 Topical sealers
- 2 Penetrating sealers
- 3 Impregnating sealers





Stone Enhancer

WET-LOOK, NO-SHEEN, WATER-BASED
PENETRATING SEALER/IMPREGNATOR

Enriches and highlights the characteristics
of the natural stone and rejuvenates the
faded or weathered condition.



Honing



Honing effectively removes micro-scratches from the marble surface. The essential feature of this process is that it results in a non-reflective surface. Since the surface does not reflect light, it seems more natural. Honed marble is significantly more durable, long-lasting, and scratch-resistant than unhoned marble.



Before



After

River-Wash

River wash is an activity conducted to achieve a slightly textured but smooth surface which brings out the natural beauty and colour of the rough stone.

The rough surface stone is treated with special abrasives and solvents.



Stain Removal

Stain removers are ideal for eliminating stains that are set deep into your stone such as wine, coffee, tea, smoke and some oils.

Stain remover may be used on polished or unpolished surfaces without fear of discolouration or etching.

It is appropriate for interior and exterior use and will not harm adhesives or grouting material.



Before



Processing



After

Annual Maintenance Contract

A comprehensive maintenance system created to maintain marble flooring, table-tops, counter-tops, scalding, and washbasins in good condition.

Every maintenance program is designed to take into account the particular needs of the property.

Cracks, pits, and opened joints are repaired immediately, avoiding extensive repair work.

This activity helps remove micro-scratches and maintain the stone's natural shine.

This preserves the natural lustre of the stone and eliminates the need for grinding throughout the stone's lifetime.





Marble Crystallization

Why Don't We Do Crystallization?



1

Crystallization is a new concept to restore marble compared to grinding and polishing. However, in recent decades, marble restoration professionals have gravitated towards the traditional method of grinding and polishing. It has now been established that over a period of time crystallization damages natural stone by changing its chemical composition.

2

Fluorosilicate, a chemical that forms the base along with paraffin and acrylics, is the main component in the crystallization process. The reaction between fluorosilicate and the calcium carbonate present in the marble results in the production of water and carbon dioxide. As a result, the chemical bond that holds the marble together weakens, causing the stone to deteriorate.

3

As a reaction to the disintegration of the chemical bond of the stone, calcium ion is produced, which then reacts with fluorosilicate to form calcium fluorosilicate, an impervious deposit that produces a hard finish on the surface and blocks the marble pores. The process chemically alters the stone surface, preventing it from breathing and trapping water vapour. Spalling, cracking, and open veins occur on the marble as a result.

4

The disadvantages of crystallisation outweigh the benefits of it being a low-cost method for marble restoration. The micro-scratches on the surface cannot be removed by this method and appear to shine brighter due to the presence of paraffin. As the paraffin wears off, the glossy crystallised surface quickly loses its lustre. The process must be repeated in rapid succession to prevent marble deterioration.



The Contrast



Crystallization Effect



A⁺ Touchstone Effect



Case Studies

TCS Nagpur

Stone: Dholpur (Sand Stone)

CONCERNS: Stains & Undulations

Process: Grinding, Joint Filling, Stain Remover & Sealant Application

Status: Project Completed



Before



After

Alta Monte

Stone: Italian Marble

CONCERNS: Hollow Surface, Cracks & Pits

Process: Grinding & Sealing

Status: Project Completed



Before



After



JSW (BKC)

Stone: Statuario Marble

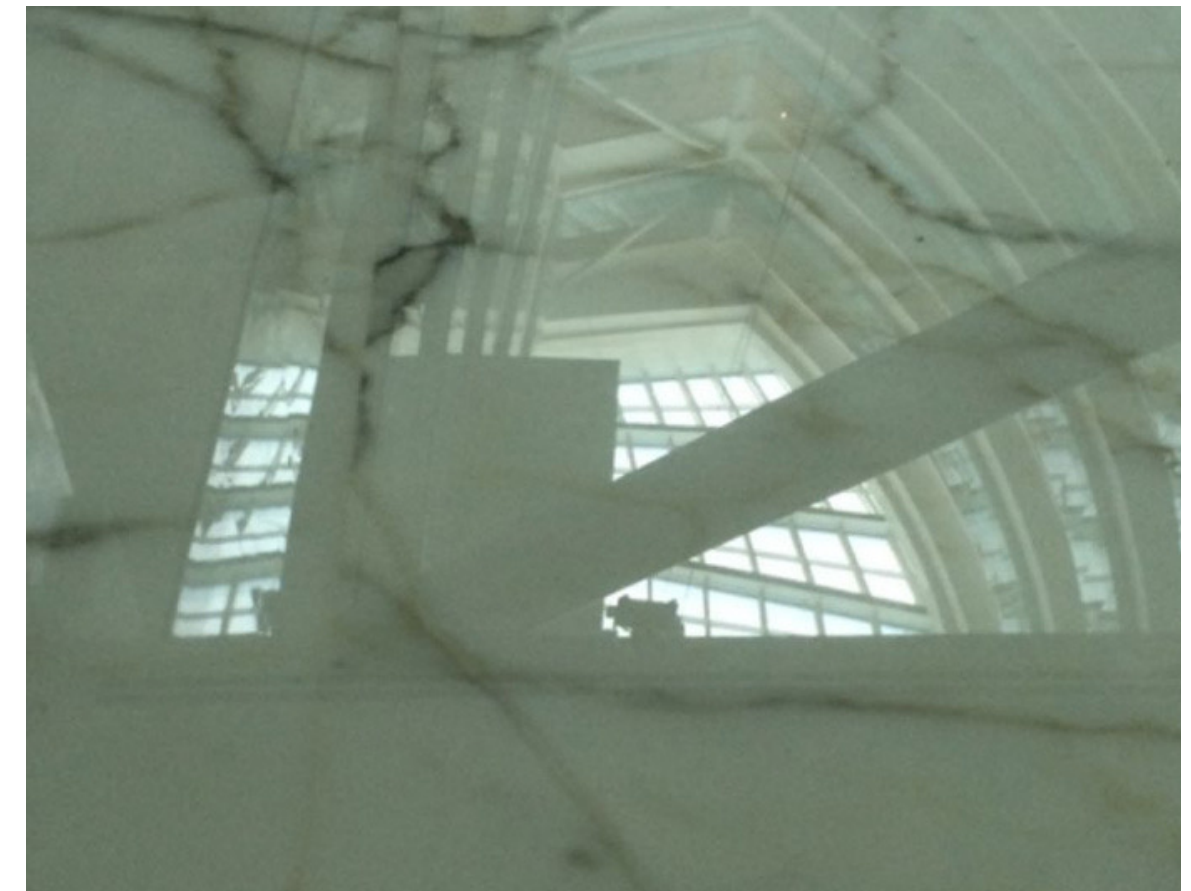
CONCERNS: Undulations, Disintegrated Grout

Process: Undulation Elimination, Filler

Status: Annual Maintenance Contract



Before



After

Morgan Stanley

Stone: Composite Marble

CONCERNS: Etched Marks & Small Pits

Process: Filler, Grinding & Sealing

Status: Project Completed



Before



After

DAMCO Chandigarh

Stone: Eta Gold Stone

CONCERNS: Surface Deterioration (Due to Environmental Factors)

Process: River Wash & Sealer Application

Status: Project Completed



Before



After





Our Work



New Parliament Building

Stone: Sandblasted Stone

CONCERNS: Restoration of laid sandblasted sandstone. The surface had deteriorated as a result of the construction work in the surrounding area.

Process: River Wash

Area: 60,000 sq. ft.

Status: One-Time Activity



Mumbai International Airport

Stone: Italian Marble

CONCERNS: Cracks, Undulation & Open Veins

Process: Filler, Grinding & Sealant Application

Area: 17,000 sq. ft.

Status: One-Time Activity, Project Completed



One World Centre Tower-1

Stone: Red Travertine

CONCERNS: Cracks & Pits

Process: Filler, Grinding & Sealing

Area: 12,000 sq. ft.

Status: Annual Maintenance Contract



One World Centre Tower-2

Stone: Italian Marble

CONCERNS: Cracks, Undulation & Open Veins

Process: Filler, Grinding & Sealing

Area: 22,000 sq. ft.

Status: Annual Maintenance Contract



One International Centre

Stone: Italian Marble

CONCERNS: Cracks & Pits

Process: Filler, Grinding & Sealing

Area: 35,000 sq. ft.

Status: Annual Maintenance Contract



JSW (BKC)

Stone: Italian Marble

CONCERNS: Cracks, Pits, Stains & Undulations

Process: Filler, Grinding, Stain Remover &
Sealant Application

Area: 72,000 sq. ft.

Status: Annual Maintenance Contract





Indiabulls Blu

Stone: Italian Marble

CONCERNS: Cracks & Pits

Process: Filler, Grinding & Sealing

Area: 22,000 sq. ft.

Status: Annual Maintenance Contract



Kotak Mahindra (BKC)

Stone: Italian Marble

CONCERNS: Cracks & Pits

Process: Filler, Grinding & Sealing

Area: 18,000 sq. ft.

Status: Annual Maintenance Contract



ITC Maratha

Stone: Italian Marble

CONCERNS: Cracks

Process: Filler, Grinding & Sealing

Area: 25,000 sq. ft.



Tahnee Heights

Stone: Italian & Composite Marble

CONCERNS: Hollow Flooring, Lippage & Uneven Surface, Cracks, Joints & Veins

Process: Grinding & Polishing

Area: 8,000 sq. ft.

Status: One-Time Activity, Project Completed



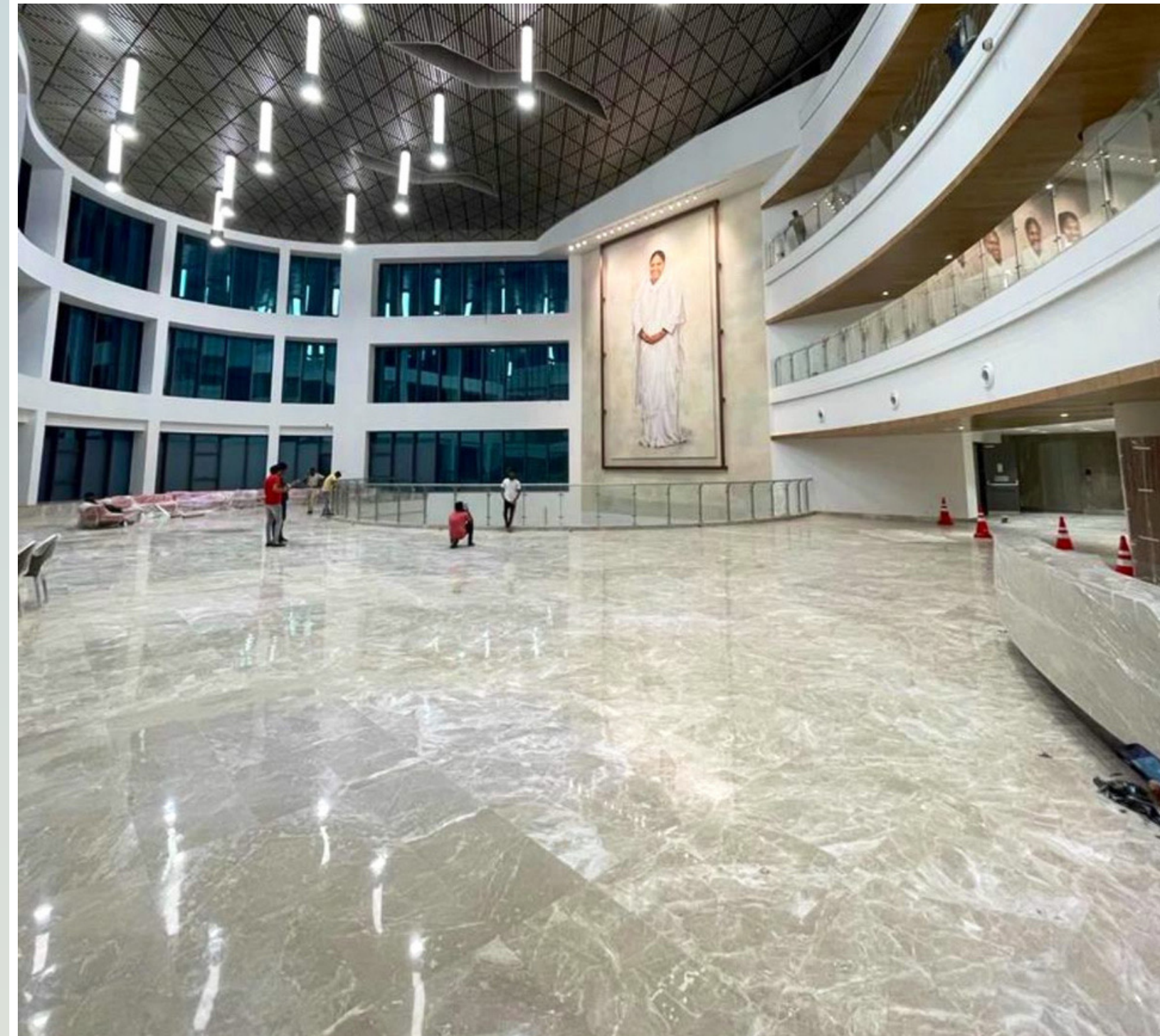
AIMS Faridabad

Stone: Italian Marble

Process: Filler, Grinding & Sealing

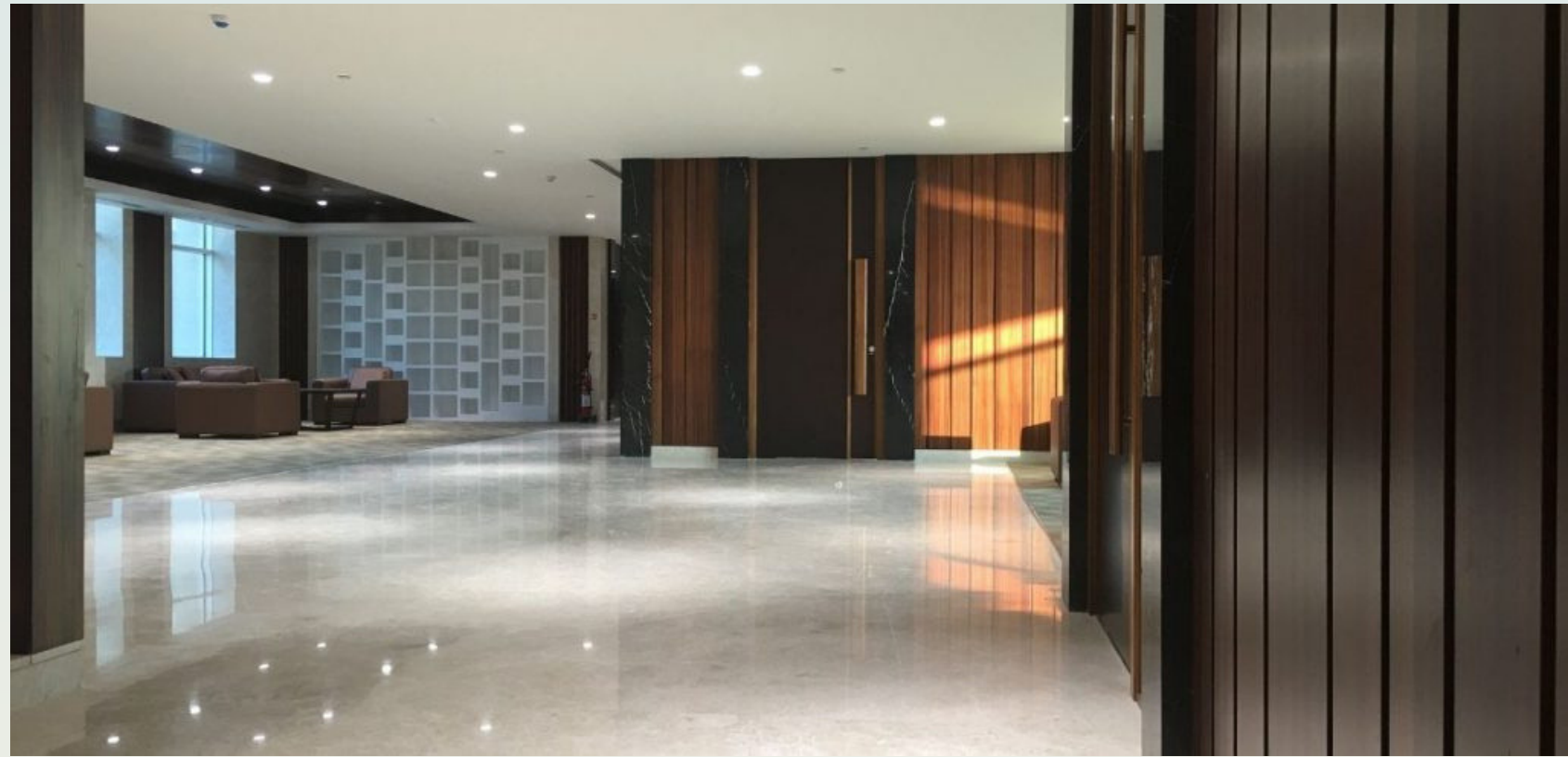
Area: 3,00,000 sq. ft.

Status: One-Time Activity, Ongoing





What the A⁺ Touchstone Shine Looks Like









Our Clients





New Parliament Building



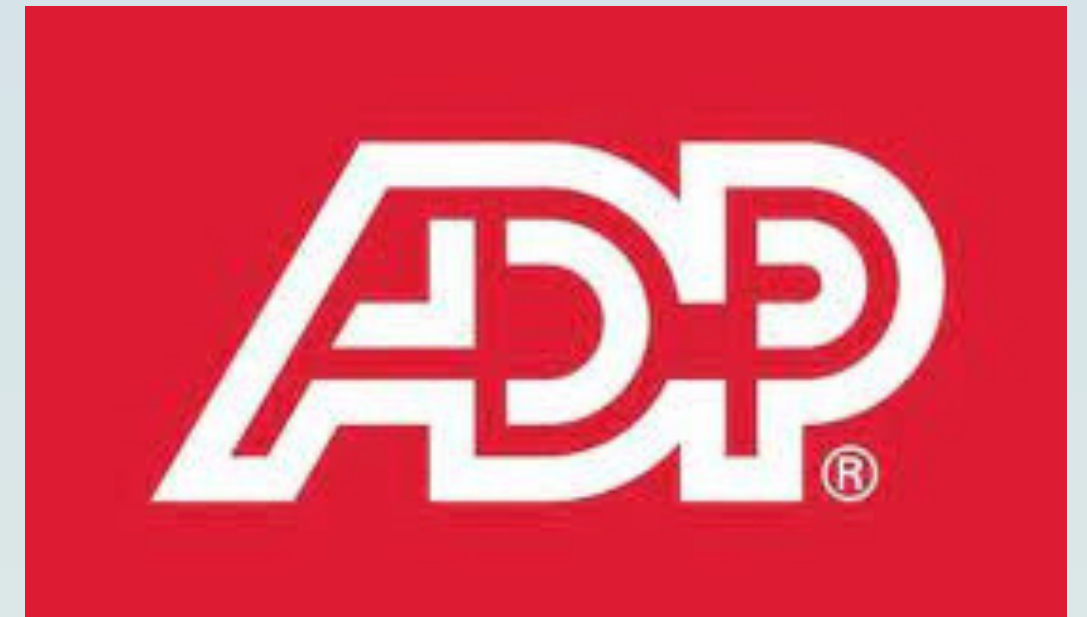




Infosys











Tahnee Heights







Connect with Us



E-mail	info@aplustouchstoneservices.com
Website	www.aplustouchstoneservices.com
Phone	<u>+91-9920160941</u>
WhatsApp	<u>+91-9920219640</u>